



# Using Maximo for Incidents & Investigations

Presenters:

Craig Mackenzie, Ontracks Consulting

Nizam Jiwa, Progress Energy



**Expert**

Assets & Operations

**IBM Excellence Award**

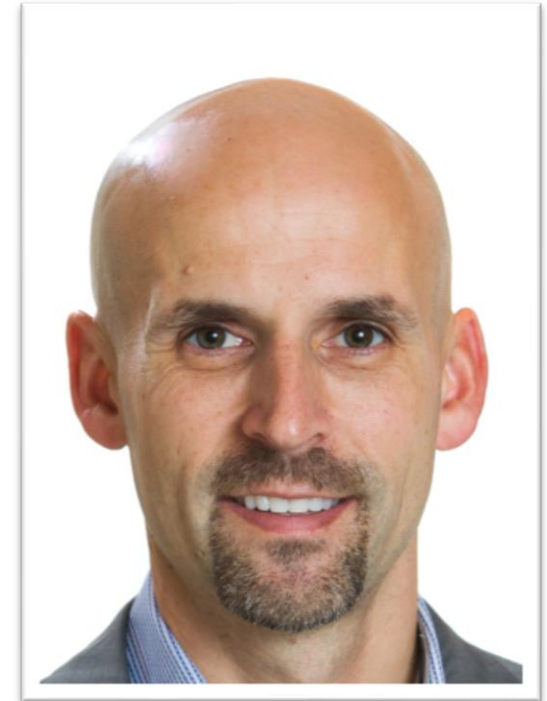
IBM Watson IoT 2018

# Agenda

- Introductions
- Progress Energy – Company Overview
- Incident, Investigation and Action High-Level Process
- Solution Details
- Demonstration
- Questions

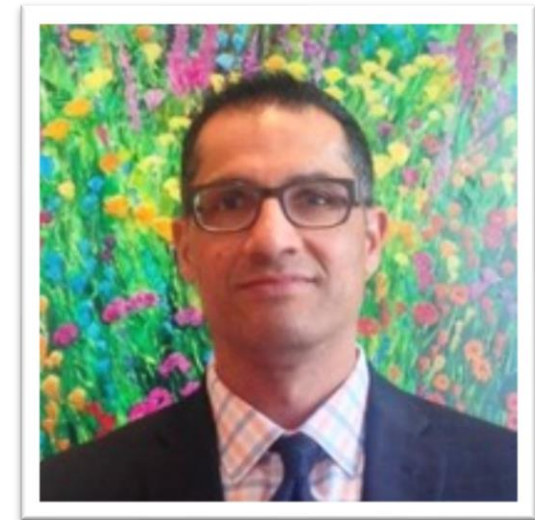
# Craig Mackenzie, Principal Consultant, Ontracks Consulting

- 19 years of Maximo Experience
- Solution Architect at Progress Energy
- Experience with:
  - Maximo for Oil & Gas
  - Maximo HSE
  - Maximo Transportation
  - Maximo Utilities
- Passionate about solving business problems through improved processes and tools such as Maximo



## Nizam Jiwa, Program Manager, Progress Energy

- Senior Management Consultant with over 21 years of experience
- Experience in enterprise application implementations, MOC, deployment, process re-engineering and enterprise application support.
- Likes to solve business issues in complex environments in the area of, supply chain management, finance, capital projects, asset management, maintenance, HSSE, logistics, production planning and human capital management.

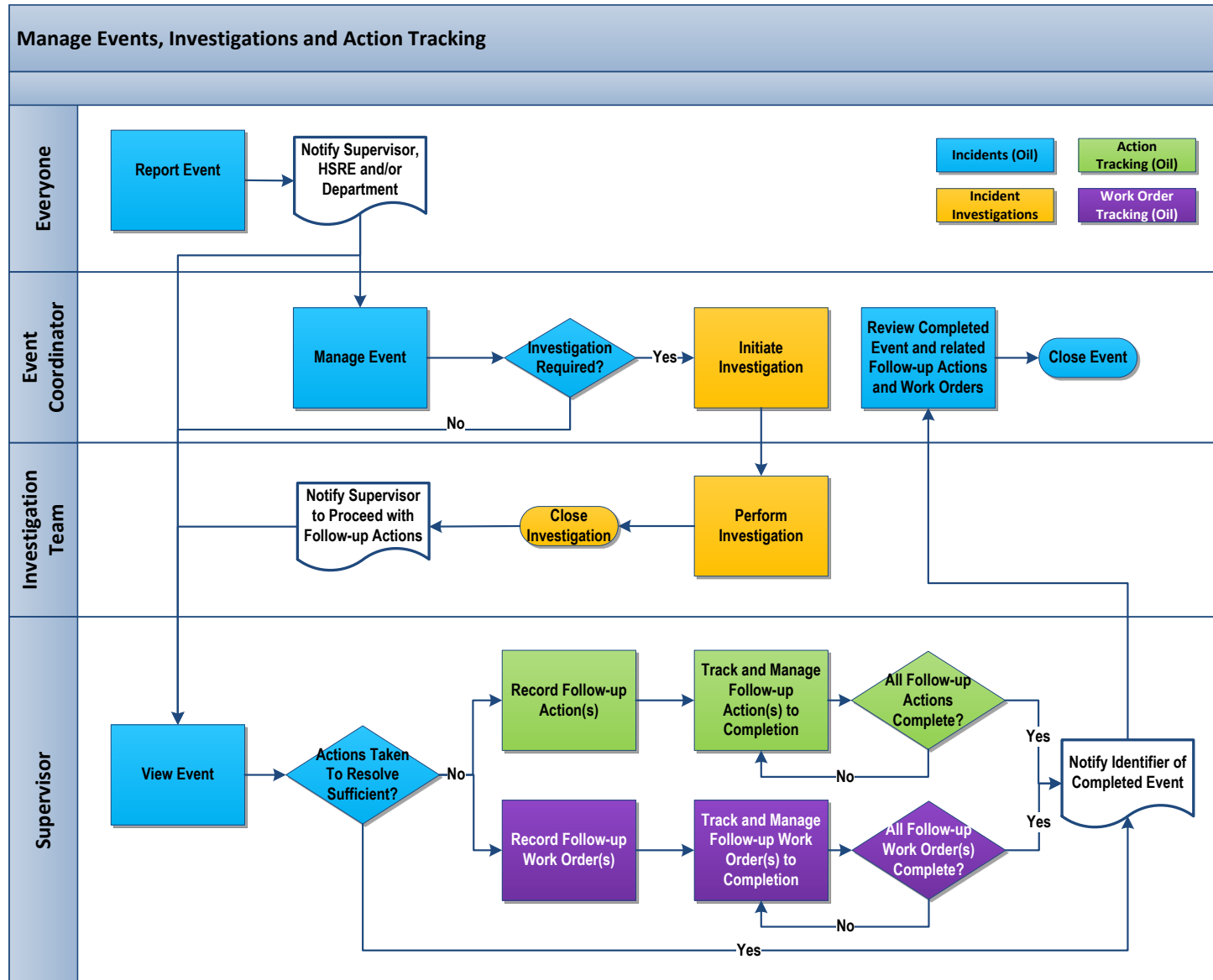


# Progress Energy - Company Overview

- Leader in Canadian natural gas development, Progress Energy is building upon its history of performance excellence in North America
- Progress is an upstream energy company focused on the responsible development of unconventional natural gas in the North Montney (Northeast BC).
- Together with its North Montney Joint Venture partners, Progress is the largest natural gas reserves owner in Canada with approximately 800,000 acres of largely contiguous mineral rights in the North Montney and over 52 trillion cubic feet of reserves and contingent resources.
- Progress Energy is Progress is wholly owned by PETRONAS of Malaysia



# Process Flow



# Solution Details

- Fully integrated with:
  - Work Orders
  - MOC (Management of Change)
  - Locations / Asset Hierarchy
  - Labor / People
- LTIF and TRIF Trends – monthly, year to date, life to date
- Injury Free Days Count – for lost time and recordable injury
- Event Type Counts and Trends by department/functional area
  - Fatalities
  - Lost Time Injuries
  - Recordable Injuries - Recordable & First Aid Events Trend
  - Incidents
    - Property Damage Events Equipment Types with Factors, Causes, Failed or Missing Controls
    - Environment Release Events Volumes and Product Types with Causes
  - Near Miss - Near Miss Event Factors, Causes, Failed or Missing Controls
  - UA/UC - Unsafe Acts Factors



# Demo

- Unsafe Condition
  - Create and submit an Unsafe Condition
  - Review and close
- Complex Incident
- Investigation



Solution is a fit?

Contact Nizam for access to the specific configurations:

Nizam Jiwa

403-870-5492 or [njiwa@progressenergy.com](mailto:njiwa@progressenergy.com)

# QUESTIONS?

Contact Craig Mackenzie at:  
+780-916-1785 or  
cmackenzie@ontracks.com  
[www.ontracksconsulting.com](http://www.ontracksconsulting.com)

Contact Nizam Jiwa at:  
+403-870-5492 or  
njiwa@progressenergy.com  
[www.progressenergy.com](http://www.progressenergy.com)